

# Neighborhood Congregational Church Affordable Housing Development

Application Plans | December 2025

ktgy

■ RELATED

# City of Laguna Beach Goals/Housing Element

**Collaboration**



The City of Laguna Beach Housing Element identified Neighborhood Congregational Church’s property as one of the 4 sites to potentially yield new affordable housing. The location of the site and the willingness of the site’s owner make it viable to pursue at this time.

**State of CA Mandate**



The City of Laguna Beach must plan for and accommodate the development of 394 housing units over the next 5 years – 198 units are needed for extremely low, very low and low-income households.

**Income Eligibility & Rents**



Target household income levels will be from \$33,550 to \$109,680 per year. Rents will range from \$888 to \$2,640. Our proposed development will help satisfy the City’s low-income mandates.

# Proposed Development

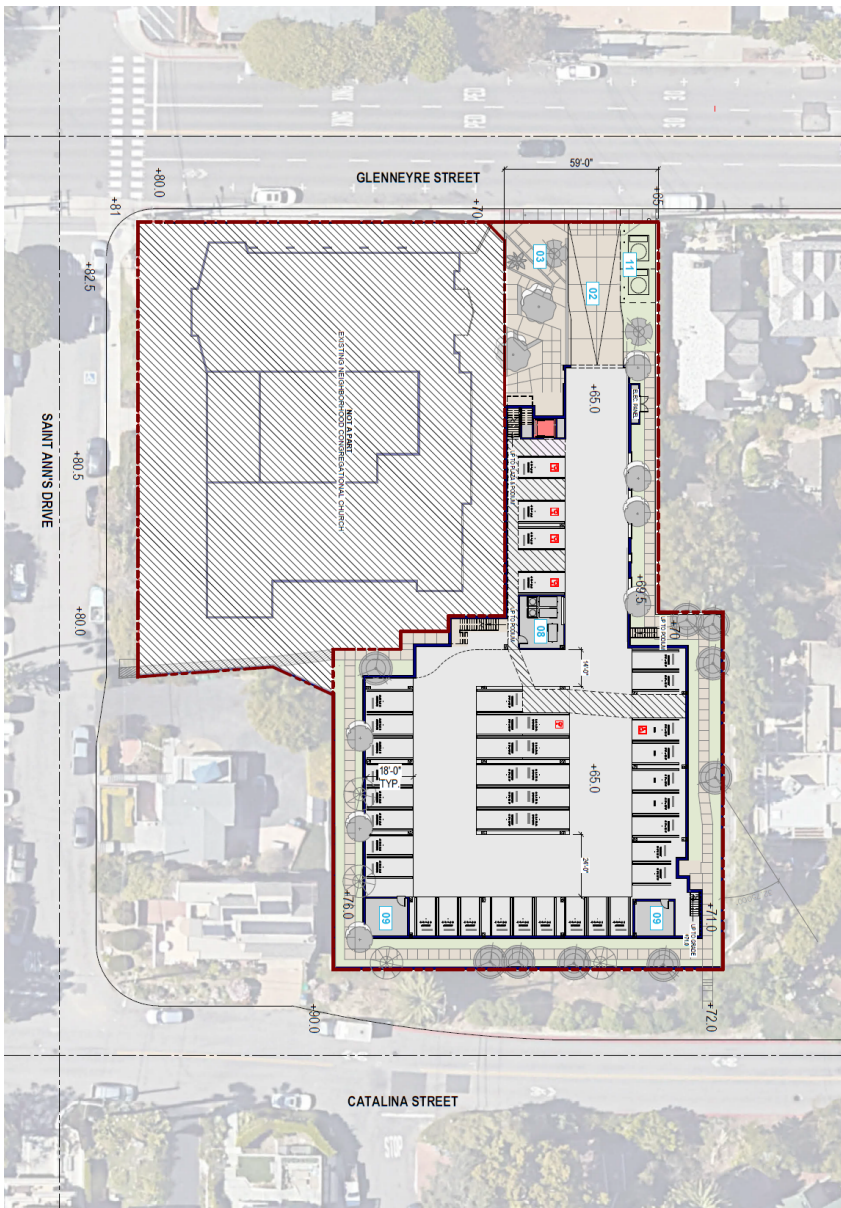
## RESIDENTIAL

- 28 residential units – 100% affordable + 1 resident manager unit
- 2-story building
- Podium parking garage with 41 spaces

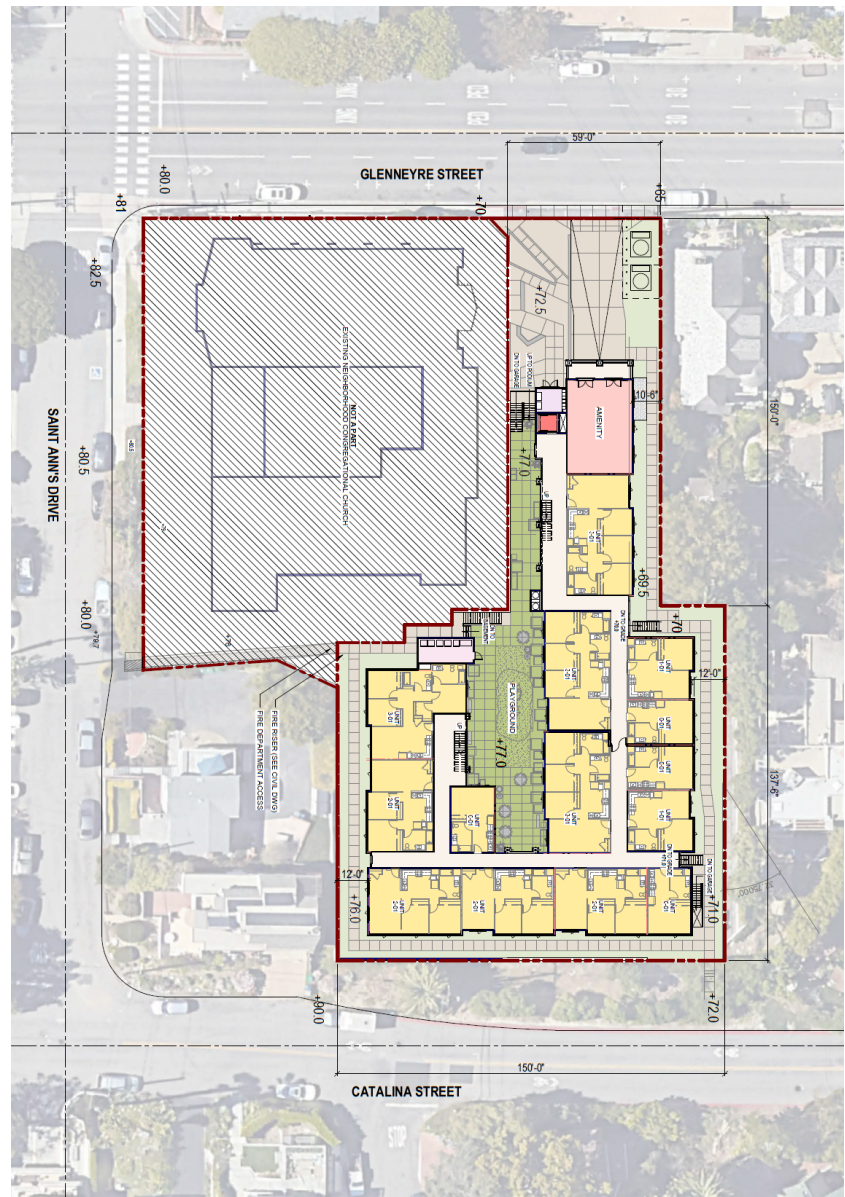
# Community Benefits

- **Affordability:** Rentals with long term affordability with priority for a variety of Laguna Beach workers (e.g., school and city employees, hotel and retail workers)
- **Sustainability:** Reduced greenhouse gas emissions from shorter commutes, building electrification, and solar energy generation
- **Enhanced Accessibility:** Designed environments to be usable by people with a wide range of abilities, going beyond minimum requirements





Parking Level



Plaza Level



**View from Glenneyre Street**

**Thank You.**